



Chip Spreaders

Chip Spreaders



Chip Spreaders

Features Include:

- Automatic Conveyor Belt Controls
- Automatic Application Rate Control (CSH only)
- Positive Traction Control (CSH only)
- Swing-Over Control Console
- 10- to 15-foot Spread Hoppers
- 160 HP Cummins Engine (CSM only)
- 173 - 203 HP Cat Engine (CSH only)

Best in Class



CSM & CSH Chip Spreaders



Versatile, Economical and Proven

Since the original Flaherty model chip spreader was developed, LeeBoy's chip spreaders have been the industry standard. From the simple operation of the mechanical CSM to the superior automation of the hydrostatic CSH, users can choose the chip spreader best suited for their type of business.

New Tier 3 electronic engines provide the latest in engine technology. These engines meet all current EPA emission standards while improving engine performance and reducing engine noise levels.

Mechanical Chip Spreader

- 1 Hydraulic power gate control allows the driver to infinitely vary the gate opening.
- 2 Heavy-duty, truck-type transmission has 10 speeds forward and 2 reverse speeds. Forward travel speeds to 19 mph (30.6 km/hr).
- 3 Rear axle is a heavy-duty, planetary-type with electronic shift, 2-speed differential.
- 4 Optional hydraulic reverse provides quick reversing in tight spots and allows the transmission to provide variable speeds in reverse up to 19 mph (30.6 km/hr).
- 5 Oversized receiving hopper that is 9' 6" (2.9 m) wide allowing for 3.5 cubic yards (269 cu m) struck capacity.

Hydrostatic Chip Spreader

Application rate control computer monitors the actual speed of the chip spreader and varies the gate opening to maintain the set application rate.

Computer maintains a constant ground speed and delivers a smooth operation regardless of load condition.

Power train's front wheel drive feature delivers positive traction for smooth starting even on steep grades.

Swing-over controls provide driver with left- and right-hand operation for increased visibility and greater safety.

Oversized receiving hopper with folding wings that are 11' 10" (3.6 m) wide, unfolded, allowing 4 cubic yards (3.06 cu m) struck capacity.

OPERATING DIMENSIONS: 12-foot hopper and standard tires.

Length	Width	Height	Wheelbase	Turning Radius	Ground Clearance	Tread Width
24'6" (7,465 mm)	12'9" (3,885 mm)	8'4" (2,539 mm)	126" (3,199 mm)	20'6" (6,246 mm)	7" (178 mm)	83" (2,107 mm) front 91" (2,311 mm) rear

SHIPPING DIMENSIONS: Main unit and spread hopper are loaded separately. Main unit weight includes no optional equipment. Consult factory.

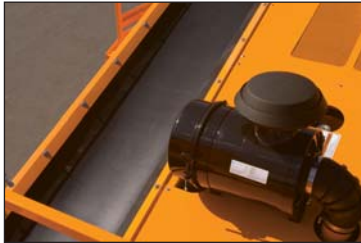
	Main Unit	10' Hopper	11' Hopper	12' Hopper	13' Hopper	13'6" Hopper	14' Hopper	14'6" Hopper	15' Hopper
Weight lb. (kg)	12,580 (5,706)	2,300 (1,043)	2,420 (1,098)	2,570 (1,166)	2,720 (1,234)	2,800 (1,270)	2,875 (1,304)	2,952 (1,341)	3,030 (1,374)
Length in. (mm)	253 (6,426)	131 (3,326)	140 (3,556)	152 (3,859)	164 (4,162)	170 (4,316)	176 (4,469)	182 (4,622)	188 (4,773)
Width in. (mm)	114 (2,895)	50 (1,270)							
Height in. (mm)	100 (2,539)	42 (1,066)							

All spread hoppers have the same shipping width and height dimensions.

1

Automatic Control

CSH computer maintains accurate application rate of aggregate regardless of changes in ground speed and allows the gates to vary infinitely. Operator has easy access to change the rate at any time, even while chipping. Gates automatically close when machine is stopped.



2

Clean Operation

Rubber side skirting runs the complete length of conveyor belts to prevent spillage of the aggregate.

3

Economical Operation

CSM offers the simple control of a mechanical ship spreader. Hydraulic power gate lever allows driver to control gate openings from the operator's station. Heavy-duty, truck-type transmission makes for easy operation.



4

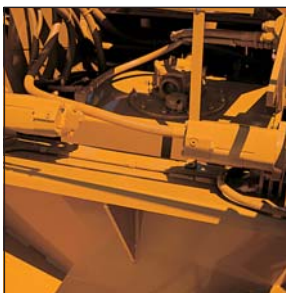
Complete Clean Out

Wheel wells do not protrude into the hopper area blocking the flow of rock or reducing capacity. Conveyor belts maximize clean out of receiving hopper because they start at the very bottom of the hopper. The CSH is equipped with folding wings that enhance clean out operations.

5

New Style Folding Hopper Wings

New style folding wings assist with hopper clean-out and has added clearance for truck in loading of receiving hopper. Hopper has increased capacity of 4 cubic yards.



6

Reduce Maintenance

Conveyor drive motors are on floating mounts for dependable, low maintenance performance.

7

Smooth Operation

CSH offers hydrostatic drive to ensure smooth starts and stops. Application rate computer monitors speed and varies the gate openings to maintain the set application rate.



Specifications

	CSM MECHANICAL DRIVE	CSH HYDROSTATIC DRIVE
CHASSIS	Lower members are structural box beams, unit welded to rear and front axle carriers. Conveyor sides have welded front pyramid and bracings to form a completely unitized structure.	Lower members are structural box beams, unit welded to rear and front axle carriers. Conveyor sides have welded front pyramid and bracings to form a completely unitized structure.
POWER TRAIN	14" diameter clutch and 5-speed forward, 1-speed reverse transmission with 2-speed rear axle. Option: Hydraulic reversing capability for speeds of 0-19 mph (0-30.6 km/hr).	Hydrostatic front wheel drive with closed loop feedback. Three modes of operation for speeds 0-20 mph (0-32 km/hr) including automatic speed control.
ENGINE	Cummins Model QS84.5, 4-cylinder, turbo-charged diesel, 275 cu in, 160 HP at 2,200 rpm. Liquid-cooled with heavy-duty radiator, variable speed governor, dry-type air cleaner, electric starter, alternator, battery and fuel-water separator	Caterpillar Model C6.6, 6-cylinder, turbo-charged diesel, 402 cu in, 173 HP at 2,200 rpm. Liquid-cooled with heavy-duty radiator, variable speed governor, dry-type air cleaner, electric starter, alternator, battery and fuel-water separator.
REAR AXLE	Electric 2-speed, all planetary drive, 26,000-lb rated capacity.	4-wheel drive: planetary final drives, 20,000-lb capacity. 2-wheel drive: planetary final drives, 22,000-lb capacity.
FRONT AXLE	Oscillating truck-type, 16,000-lb rated capacity.	Oscillating truck-type, 25,000-lb rated capacity.
STEERING	Orbital type, full hydraulic powered, no mechanical linkage.	Orbital type, full hydraulic powered, no mechanical linkage.
BRAKES	4-wheel hydraulic power. Front: drum-type; rear: disc-type	2-wheel hydraulic power assist disc brakes in front; hydrostatic dynamic braking with self-energizing, disc-type emergency/park brakes in rear.
WHEELS AND TIRES	Budd disc-type with 11.00 x 22.5, load range H, 16-ply rated, truck-type with highway tread. Options: 11.00 x 22.5, load range H, 16-ply rated dual rear tires Four 385/65R 22.5, load range J, duplex radial	Four 385/65R 22.5, load range J duplex radial. No options.
HITCH	Positive locking, hydraulic release with safety catch.	Positive locking, hydraulic release with safety catch, hydraulic height adjustment.
HYDRAULIC SYSTEM	3-element hydraulic pump directly driven from engine crankshaft, independent circuits for each conveyor, hopper spread roll and agitator, power steering, power brakes, 30-gal (113.5 l) reservoir, filters, cooler and valves included.	4-element direct drive off main drive pumps, two 2-element pumps provide independent circuits for each conveyor, hopper spread roll and agitator, power steering, power brakes, 30-gal (113.5 l) reservoir, filters, cooler and valves included.
APPLICATION RATE CONTROL	Not available in mechanical drive CSM.	System to maintain accurate application of aggregate on road surface regardless of changes in speed.
REAR RECEIVING SYSTEM	9'6" (2.9 m) wide, 3.5 cu yd (2.68 cu m) struck capacity with feed control gates adjustable from operator platform.	11'10" (3.6 m) wide unfolded, 4.0 cu yd (3.06 cu m) struck capacity with paver-style folding wings, feed control gates adjustable from operator platform.
CONVEYORS	Two independently-operated, 20" (51 cm) wide, hydraulically-driven belts. Full length side skirting, self-cleaning tail pulley with adjustable and removable trough idlers. Variable speed conveyors and automatic conveyor controls.	Two independently-operated, 20" (51 cm) wide, hydraulically-driven belts. Full length side skirting, self-cleaning tail pulley with adjustable and removable trough idlers. Variable speed conveyors and automatic conveyor controls.
FRONT SPREAD HOPPER	Radial cut-off gates adjustable in 6" and 12" (15.2 cm and 30.5 cm) wide increments, full width reject screen (grizzly). Hydraulic power assist gate, open/close control.	Electro-hydraulic power gate control of 6" and 12" (15.2 cm and 30.5 cm) wide increments with infinitely variable gate openings and automatic shut off.
SPREAD HOPPER WIDTHS	10' (3.04 m) width standard. Optional widths: 11', 12', 13', 13'6", 14', 14'6", and 15'.	10' (3.04 m) width standard. Optional widths: 11', 12', 13', 13'6", 14', 14'6", and 15'.
DRIVER STATION	Left- and right-hand stations with suspension seats with swing-over steering wheel and control/instrument panel.	Left- and right-hand stations with suspension seats with swing-over steering wheel and control/instrument panel. Automatic conveyor control to control amount of material in spread hopper.
OPERATOR STATION	Right-hand, full-length, non-skid walkway and safety handrails with conveyor and deflector controls; second hitch control.	Right-hand, full-length, non-skid walkway and safety handrails with conveyor and deflector controls; second hitch control.
INSTRUMENTS	Ignition switch; engine throttle; conveyor controls; hitch controls; 2-speed control; graphic display engine gauges for water temperature, engine oil pressure, tachometer, fuel, volt meter, hour meter, hydraulic temperature, warning system and engine fault codes; lockable cover.	Ignition switch; joystick control of speed and direction; engine throttle; spread hopper/conveyor controls; hitch controls; park brake and 4-wheel drive; graphic display of machine settings and engine gauges for water temperature, engine oil pressure, tachometer, fuel, volt meter, hour meter, hydraulic temperature, warning system and engine fault codes; lockable cover.
WARRANTY	One year warranty	One year warranty
MISCELLANEOUS	50-gal (189.3 l), lockable fuel tank; toolbox; ladders each side and safety handrails; electric backup alarm and warning horn; light package and variable speed conveyors.	50-gal (189.3 l), lockable fuel tank; toolbox; ladders each side and safety handrails; electric backup alarm and warning horn; light package.
PAINT	LeeBoy Highway Yellow	LeeBoy Highway Yellow
OPTIONS	Aggregate placement screen, hydraulic reverse, left-hand spread hopper walkway and handrails, front hopper railings, second front hopper agitator, vandalism protection package, non-standard paint.	Remote individual gate control, aggregate placement screen, left-hand spread hopper walkway and handrail, front hopper railings, second front hopper agitator, vandalism protection package, non-standard paint.



LeeBoy makes continuous improvements in all its products. We reserve the right to change specifications without notice. Photos and illustrations may contain standard and optional equipment.

Chip Spreader O2-10 2K
#13417

Contact your LeeBoy dealer: